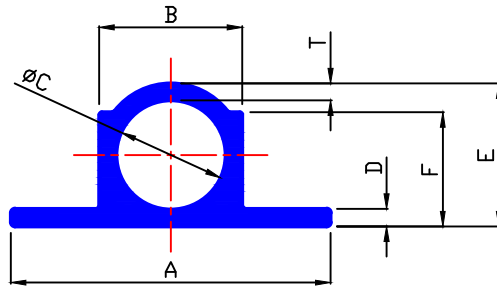


## TOWER BOLT

SEC.NO.	Amm	Bmm	Cmm	Dmm	Emm	Fmm	Tmm	WEIGHT RANGE Kg/12'
6162/L	37.00	15.20	12.60	1.90	15.20	12.00	1.30	1.250 TD 1.300
6163/L	29.00	11.10	9.60	1.10	11.10	8.20	0.75	0.550 TD 0.600
6163/H	29.00	11.30	9.60	1.20	11.30	8.50	0.85	0.600 TD 0.650
6164/L	30.00	11.60	9.80	1.40	11.60	8.80	0.90	0.700 TD 0.750
6164/H	30.00	11.60	9.80	1.75	11.60	8.80	0.90	0.750 TD 0.800
6165	31.00	11.60	9.80	1.45	11.60	8.80	0.90	0.725 TD 0.825
6166/L	36.00	14.00	12.00	1.50	14.00	10.60	1.10	0.900 TD 0.975
6166/H	36.00	14.20	11.90	1.60	14.20	10.70	1.15	0.970 TD 1.050
6167	31.00	12.40	10.50	1.25	12.40	9.80	1.00	0.750 TD 0.800
6168	38.00	17.00	12.50	2.20	17.00	13.60	2.25	1.800 TD 1.950
6169	37.00	15.00	12.30	2.20	15.00	12.00	1.35	1.300 TD 1.400
6171/L	36.00	13.10	11.60	1.45	13.10	9.83	0.70	0.780 TD 0.850
6171H	36.00	13.10	11.50	1.63	13.10	9.83	0.80	0.850 TD 0.900
6179	31.00	11.60	9.80	0.85	11.60	8.80	0.90	0.580 TD 0.650
6180/H	37.50	16.70	12.70	2.20	16.70	13.50	2.10	1.630 TD 1.700
6180/L	37.50	16.70	12.80	1.90	16.70	13.50	1.95	1.580 TD 1.630
6182	38.00	17.00	13.00	2.10	17.00	13.60	2.00	1.700 TD 1.750
6183	38.00	17.50	13.00	2.50	17.50	13.00	2.25	1.900 TD 1.950
6184	37.00	15.00	12.00	1.40	15.00	12.20	1.50	1.200 TD 1.250





## TOWER BOLT

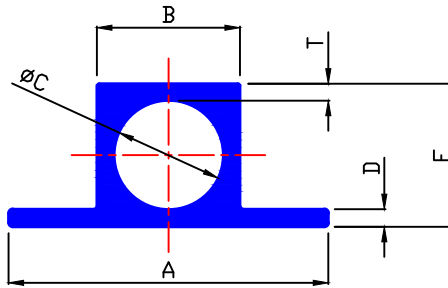
SEC.NO.	Amm	Bmm	Cmm	Dmm	Emm	Fmm	Tmm	WEIGHT RANGE Kg/12'
6146/H	30.00	10.80	9.50	1.10	10.80	8.00	0.70	0.550 TO 0.600
6146/L	29.00	10.80	9.50	0.90	10.80	8.00	0.65	0.470 TO 0.520
6147/L	30.80	11.80	10.50	1.14	11.80	9.40	0.65	0.580 TO 0.620
6147/H	31.00	12.00	10.40	1.20	12.00	9.60	0.80	0.620 TO 0.700
6148/EH	31.00	12.40	10.60	1.85	12.40	10.00	0.95	0.815 TO 0.860
6148/H	31.00	12.40	10.70	1.50	12.40	10.00	0.90	0.750 TO 0.815
6148/M	31.00	12.40	10.80	1.45	12.40	10.00	0.85	0.725 TO 0.770
6149/L	35.60	12.40	11.00	1.20	12.65	9.95	0.70	0.725 TO 0.775
6149/H	35.80	12.70	10.90	1.20	12.70	10.00	0.85	0.775 TO 0.815
6152	34.10	11.90	10.90	0.64	12.00	8.80	0.50	0.455 TO 0.525
6153	25.00	10.00	8.50	1.05	10.00	8.60	0.75	0.475 TO 0.550
6155/H	31.00	11.60	9.80	1.40	11.60	8.80	0.90	0.720 TO 0.800
6155/L	31.00	11.60	9.80	1.30	11.60	8.80	0.90	0.670 TO 0.725
6155/EL	31.00	11.60	9.80	1.20	11.60	8.80	0.90	0.650 TO 0.700
6156/L	31.50	13.40	11.00	1.40	13.40	10.70	1.25	0.900 TO 0.950
6156/H	31.50	13.50	11.00	1.50	13.50	10.80	1.20	0.950 TO 1.000
6157	31.50	11.80	9.80	1.45	11.80	9.00	1.10	0.750 TO 0.800
6159	33.00	14.20	10.70	2.00	14.20	10.70	1.75	± 7 %
6161	38.00	17.00	13.00	2.70	17.00	13.60	2.00	1.800 TO 1.900
6162	37.00	15.50	12.50	2.00	15.50	12.00	1.60	1.300 TO 1.360





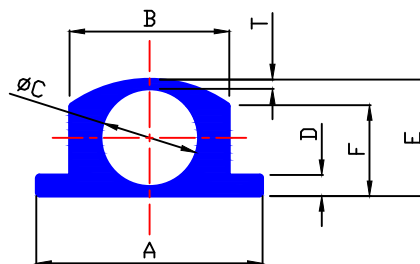
# MAAN ALUMINIUM LTD.

## TOWER BOLT SQUARE



SEC.NO.	Amm	Bmm	Cmm	Dmm	Emm	Tmm	WEIGHT RANGE Kg/12'
6154	31.50	12.60	10.80	1.35	12.60	0.90	0.900 TO 0.975
6170	31.00	12.00	10.70	1.20	12.00	0.65	0.740 TO 0.790
6170/L	31.00	12.00	10.50	0.85	12.00	0.75	0.700 TO 0.750
6188	31.00	12.30	10.30	1.20	12.30	1.00	0.800 TO 0.850
6189	31.40	12.80	10.80	1.25	12.80	1.00	0.900 TO 0.950
<b>6193</b>	<b>37.00</b>	<b>15.00</b>	<b>12.60</b>	<b>1.65</b>	<b>15.00</b>	<b>1.20</b>	<b>1.300 TO 1.350</b>
<b>61006</b>	<b>30.80</b>	<b>11.80</b>	<b>10.40</b>	<b>1.00</b>	<b>11.80</b>	<b>0.70</b>	<b>0.670 TO 0.770</b>

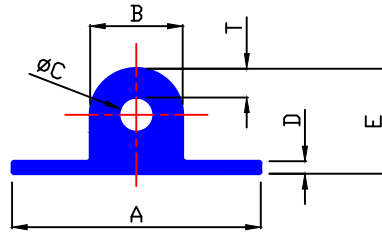
## TOWER BOLT SPECIAL



SEC.NO.	Amm	Bmm	Cmm	Dmm	Emm	Fmm	Tmm	WEIGHT RANGE Kg/12'
61005	24.80	17.50	10.70	2.30	12.80	9.98	1.05	1.300 TO 1.400

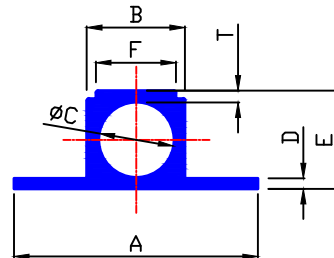


**TOWER BOLT SOLID**



SEC.NO.	Amm	Bmm	Cmm	Dmm	Emm	Tmm	WEIGHT RANGE Kg/12'
89691	35.50	13.20	5.00	1.80	15.00	4.10	1.900 TO 2.000
89692	35.50	13.00	5.00	4.90	15.00	4.00	2.600 TO 2.700

**TOWER BOLT MISCELLANEOUS**



SEC.NO.	Amm	Bmm	Cmm	Dmm	Emm	Fmm	Tmm	WEIGHT RANGE Kg/12'
61000	34.80	14.00	10.70	1.50	14.00	11.40	1.65	1.300 TO 1.400